



UNIVERSITY OF OXFORD
**REFUGEE-LED
RESEARCH HUB**



About RLRH

The Refugee-Led Research Hub (RLRH) is an initiative of the Refugee Studies Centre at the University of Oxford. Founded in October 2020, we support individuals with lived experience of forced displacement to become leaders in fields of humanitarian response, forced migration, human rights, and other areas of interest that are identified by affiliates. We do so by delivering academic programming to a global cohort of students who have been affected by displacement, supporting access to graduate degrees and professional development opportunities. RLRH also creates opportunities for researchers with displacement backgrounds to lead primary and secondary research studies, from start to finish. Our research agenda is guided by the concerns of forcibly displaced communities and aims to have a direct impact on policy and practice.

A majority of RLRH colleagues and scholars identify as current or former refugees, asylum seekers, IDPs, and stateless persons, amongst other categories. The RLRH has offices in Nairobi and Oxford.

At a glance



400+

Learners, researchers,
& staff across the world



2500+

Applications submitted for
RLRH programmes



29

Professional placements
with partner organisations



70%+

Identify as women
or non-binary



8

Research reports published



25+

Offers to graduate degrees
in 2022-23

If you'd like to reach out, please find us at:

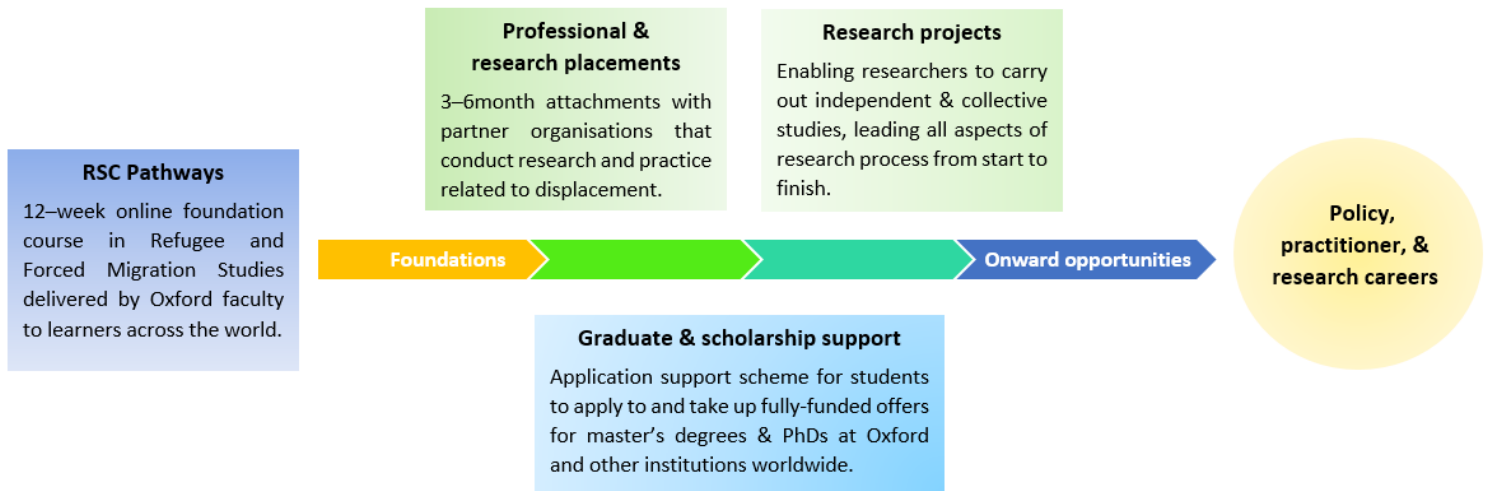
Web: www.refugeeledresearch.org

Twitter: @RLRH_Oxford

Email: info@refugeeledresearch.org

RLRH Activities

We support individuals at different stages of their academic and professional journeys, ensuring opportunities for progressive professional development. A key underpinning of our work is a graduation model that supports RLRH affiliates in acquiring skills they might need in their journeys, beginning with the foundational RSC Pathways course (an online programme in Refugee and Forced Migration Studies), and carrying onward to advanced academic training and professional opportunities.



1. RSC Pathways

This foundational course in Refugee Studies is designed to support students who wish to pursue graduate degrees and advanced professional and research careers. It provides both an online and in-person platform for learners affected by displacement to study the main disciplines and themes in this field. The semi-synchronous course is inspired by the RSC's 9-month MSc in Refugee and Forced Migration Studies, covering content from International Relations, Anthropology, Law, Philosophy, Gender Studies, Economics, and more. Since its launch in 2022, 354 learners have enrolled in the course, with an 88% completion rate.

- RSC Pathways lasts 12 weeks. Graduates receive a certificate.
- Learners progress to apply to graduate degrees, professional placements, and other advanced opportunities.
- In 2024, RLRH will develop a self-paced version Pathways with capacity to enrol 1000+ learners per year.



Who is taking RSC Pathways?

Green pin: Students' country of origin. Red pin: Students' current place of residence.

2. Graduate Horizons

Our global application support programme, Graduate Horizons, provides graduate and scholarship application support to prospective candidates based anywhere in the world who have been affected by forced displacement. The programme offers individualised mentorship throughout the graduate application process, opening possibilities for fully funded scholarships at Oxford and other institutions worldwide.

- For entry in the 2023-24 academic year, 65 prospective applicants were matched with mentors. Over 300 individuals received a self-guided application support package.
- More than 24 offers were made for graduate degrees across different universities.
- RLRH has supported the establishment of Oxford Sanctuary Community, delivering pre-arrival, on-course, and post-completion programming for students at researchers at Oxford.

3. Professional Placements

Our professional placements programming supports RLRH affiliates access advanced professional and research opportunities with organisations and individuals who are active in humanitarian and development work.

- In 2022–23, 29 affiliates completed funded professional and research placements.
- Previous and current hosts include: PILnet, Chatham House, Refugee Education UK, DRC's Regional Durable Solutions Secretariat (ReDSS), Oxford's Forced Migration Review (FMR), UNITAR's Global Platform for Action (GPA), and ANU's Rewriting Jurisprudence, among other research groups and academics at universities worldwide.
- RLRH runs a series of professional development workshops to support affiliates attain professional and leadership skills to succeed in the placement and onward career trajectories.

4. Public engagement & outreach

RLRH affiliates regularly appear as expert speakers alongside professors, government officials, and staff of (I)NGOs and grassroots initiatives, among others. They have presented evidence- and experience- based insights in local, regional, and global fora. RLRH provides expert advice on topics relating to: refugees' access to higher education and employment; changing narratives on refugee livelihoods and self-reliance; and accountability and allyship in refugee-led research.



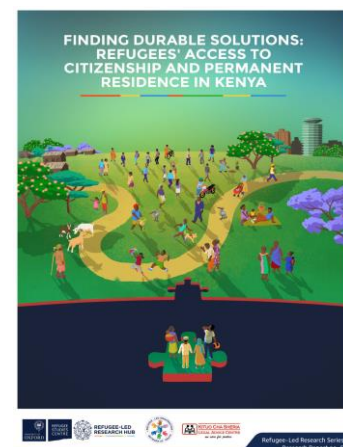
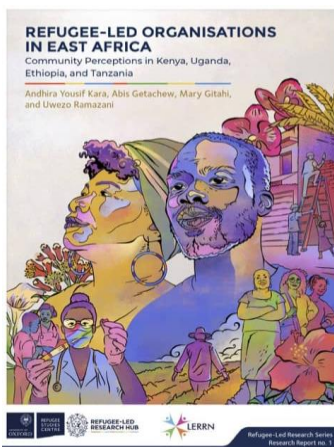
RLRH colleagues presenting at: IOM East and Horn of Africa Regional Office (left), 2023 Migration Summit (middle), and report launch for 'Refugees' Access to Work Permits and Business Licenses' (right).

Overview of research activities

Our Research Programme creates opportunities for researchers with displacement backgrounds to lead primary and secondary research studies, from start to finish. Our main research interests relate to 1) livelihoods and self-reliance; and 2) leadership and participation of displaced populations in humanitarian response and policy. We collaborate on research opportunities with allied partners committed to promoting refugee leadership in forced migration research. Our research programme offers strong research skills and granular local knowledge to stakeholders involved in the refugee response in East Africa. Our team is well-suited to lead qualitative studies exploring emerging topics that engage the refugee community. Our research findings are published in the Refugee-Led Research Series.

Publications

The Refugee-Led Research Series publishes primary and secondary research that has been authored by individuals who have been affected by forced displacement. The Series is comprised of ‘Research Reports’ and ‘Working Papers’. We prioritise papers that apply ethical and rigorous research methods to capture the priorities of displaced communities. Through the Refugee-Led Research Series, we aim to provide evidence to stakeholders to advance policies and programmes that are responsive to refugee community needs.



All RLRH publications can be accessed at refugeeledresearch.org

RLRH Working Paper Series

Our Working Paper Series presents independent and collaborative studies undertaken by researchers affected by displacement. RLRH welcomes submissions to the series. If you are interested in submitting a piece, keep an eye out for an open call for submission beginning October 2023, or send an email to info@refugeeledresearch.org.

The missing Link in Somalia's Peacebuilding Process.

Moulid Hujale, RLRH Working Paper 1, July 2023

In this first publication of the RLRH Working Paper Series, Moulid Hujale, graduate of the 2021-2022 RSC-BIEA Fellowship, argues that the voices of internally displaced people (IDPs) are missing in Somalia's peacebuilding process. His paper aims to evaluate the state of protracted displacement in Somalia and explore the role of IDPs in the country's peacebuilding process.



REFUGEE-LED RESEARCH HUB
Refugee-Led Research Series
Working Paper 1
July 2023

**THE MISSING LINK IN SOMALIA'S
PEACEBUILDING PROCESS**
The exclusion of internally displaced people
Moulid Hujale